

The POST Meeting will be held by Teleconference – The Public may access the meeting by calling the number below and entering the Meeting ID when prompted.

Phone Number: 1 669 900 6833 Or 1 301 715 8592

Meeting ID: 84643808347

Passcode: 518020



TOWN OF BASALT MEETINGS

Parks, Open Space and Trails Committee (POST)

Wednesday, February 14, 2024

By Teleconference

Basalt Town Hall

101 Midland Avenue

- | | |
|----------------|---|
| 4:00 PM | 1. Call to Order |
| 4:03 | 2. Appointment of Chair and Vice Chair |
| 4:08 | 3. Confirmation of Meeting Time |
| 4:10 | 4. Presentation of Design Workshop's Emma Bridge/Confluence Park Pedestrian Improvements Concept |
| 4:35 | 5. Whitewater Park Update |
| 4:45 | 6. Project Updates |
| 4:50 | 7. POST Member Comments and Questions |
| 5:00 | 8. Adjourn |

Public Comment is limited to 3 minutes. Those who wish to speak should email james.lindt@basalt.net before the meeting starts with their name, phone number, and identify what item they would like to address. During the meeting those wishing to comment may also email james.lindt@basalt.net, but it is not guaranteed that the email will be seen in a timely fashion.

CONFLUENCE

PARK

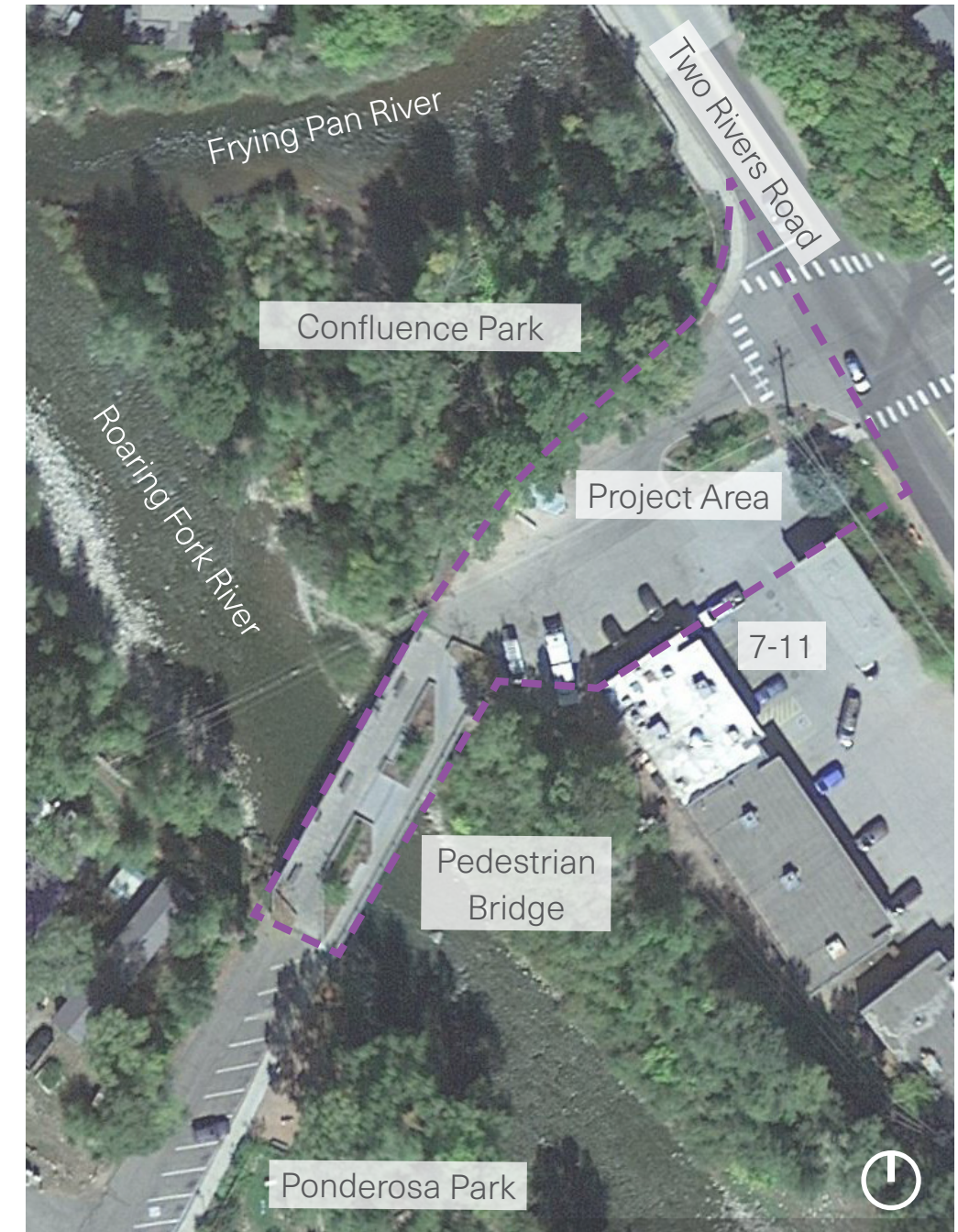
PEDESTRIAN IMPROVEMENT PLAN

PROJECT AREA

The project area is located near Old Town Basalt, next to the elementary and middle school campus and the Roaring Fork River. It includes two distinct spaces that should be designed cohesively. The first is the Pedestrian Bridge that connects pedestrians and cyclists to Basalt over the Roaring Fork River. The second is the paved street connecting Two Rivers Road to the Pedestrian Bridge. Confluence Park is in the area to the northwest of Basalt Ave. at the confluence of the Frying Pan River and the Roaring Fork River. Adjacent to the project area are Confluence Park and Ponderosa Park. Confluence Park has mostly native species and includes primitive walking paths and a bench by the river. Ponderosa Park is to the south of the Roaring Fork River, across from the Roaring Fork Mobile Home Park. This park includes an edible garden, walking paths, and a music activity area.

This project is intended to create a safer connection from the south into Old Town and extend the pedestrian character of the bridge to Two Rivers Rd. responding to the high pedestrian traffic that uses this route to connect from Southside and the Roaring Fork Mobile Home Park to the Basalt Elementary and Middle School and Old Town. The Pedestrian Bridge was closed to cars and converted to a pedestrian and bike-only connection in approximately 2012.

All plans and information included in this document were created by Design Workshop staff as part of the firm's annual Martin Luther King Jr Day of Service. All time was donated as part of the Day of Service. In addition, Basalt Girl Scout Troop 17080 provided information and ideas to kick the work off. This group of 12 fourth and fifth graders identified ways they use the site, what works well and what could be improved and their ideas for the future.



Project Area Context

KEY PROJECT GOALS

01

Improve pedestrian safety from the Pedestrian Bridge to Two Rivers Road, while accommodating existing uses and vehicular needs at 7-11

02

Utilize the Town of Basalt “Pedestrian Safety Plan” information to inform designs

03

Integrate phasing opportunities to enable temporary improvements in the short term that can lead to a more permanent improvements

04

Propose material and design enhancements for the Pedestrian Bridge

05

Integrate the ideas from the Girl Scout Troop

EXISTING CONDITIONS + EXPERIENCES

BASALT GIRL SCOUT TROOP 17080

Basalt Girl Scout Troop 17080 visited the site to brainstorm initial ideas for the street that connects the Pedestrian Bridge with Two Rivers Rd. They provided observations about safety, as well as things they enjoy about the space based on what they like about the space today and what they would like to see changed.



01/12/2024

WHAT DO YOU LIKE ABOUT THE SPACE TODAY?

- The river
- The view
- Peaceful
- Plants in the summer

WHAT DO YOU WANT TO CHANGE ABOUT THE SPACE TODAY?

- Less dead trees
- New benches
- Colors on sidewalks and in plant pots
- Less pollution
- Colorful sidewalk
- Ice rink
- Flower pots shaped like animals
- Tiles with a pattern, pictures, or that tell a story
- More trash and recycling
- Add compost
- Make easier to get down to river
- Dead plants in winter
- Make safer
- Clearer parking spaces

EXISTING CONDITIONS + EXPERIENCES

DESIGN WORKSHOP STAFF

This area of town sees many different users – kids crossing the street to get to school, parents dropping kids off via car, community members crossing to get to the BRT stop on Highway 82, residents and visitors in vehicles buying gas at the gas station, shoppers visiting Timbo’s Pizza or Basalt Printing, and residents walking their dog. It is important that the area accommodates bikers, walkers, and drivers.



01/15/2024

From a pedestrian experience, the walk along the sidewalk from the BRT stop to the end of the bridge is enjoyable – there is a clear path to walk, and it is well maintained. On the bridge, there is an at-grade area to walk with benches, and an upper area that connects directly to the sidewalk then ramps down to Basalt Ave. There are occasional conflicts between pedestrians and bicyclists on the bridge because each use both crossing options. Once a pedestrian reaches Basalt Ave., there is no clear path to walk, and during school pick-up and drop-off a Basalt Police Officer is needed to ensure kids can safely cross the street. There are multiple potential conflict points with cars because areas are not designated areas for pedestrians versus drive lanes and parking for cars.

From a bicyclist perspective, the experience is similar to a pedestrian. The bridge crossing is generally positive, but once a bicyclist reaches Basalt Ave., there is no clear area for a biker to go versus a pedestrian or car.

From a vehicular perspective, this can be a stressful place to drive due to the lack of clear driving lanes or parking spaces on Basalt Ave. In addition, during busier times of day there are more pedestrians that walk in many different locations because they do not have a designated path. The street that connects to the Pedestrian Bridge does not see high traffic or vehicular use, and it’s mainly used to access the 7-11 gas station and as a place to park to access the river area.

EXISTING CONDITIONS + EXPERIENCES

Based on this analysis and the feedback from the Girl Scout Troop and Design Workshop staff, the following site opportunities and constraints exist:

SITE CONSTRAINTS:

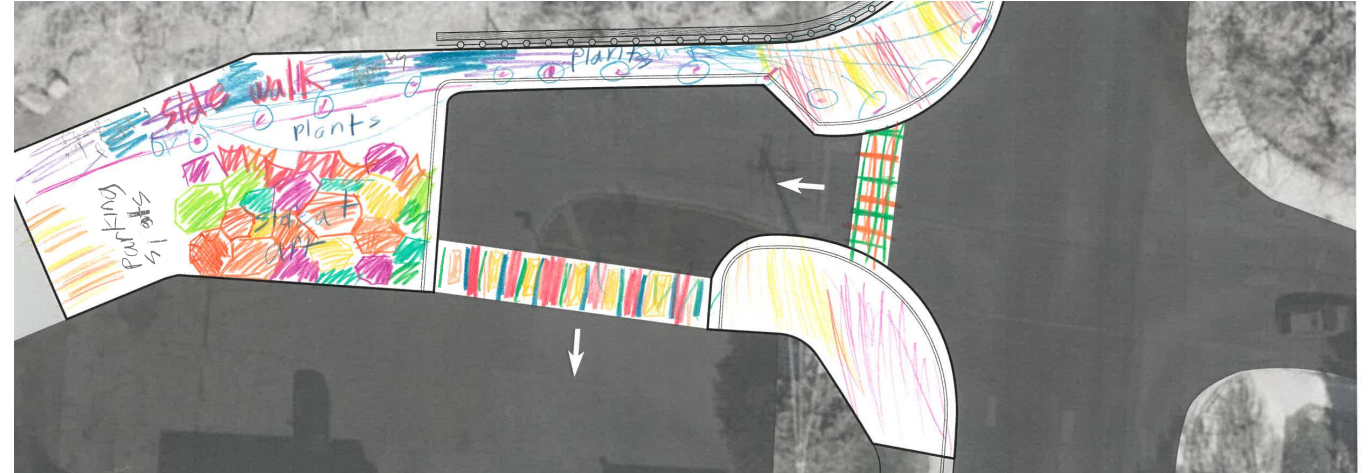
- Existing businesses need to be accommodated
- 7-11 has specific truck turning needs to ensure gas service can continue
- Location of existing dumpsters for businesses
- Lack of sidewalks on Basalt Ave from Two Rivers Road to bridge
- Lack of formal crossing on south-west corner of intersection

SITE OPPORTUNITIES:

- Formalization of pedestrian and bicycle flow to reduce pedestrian-car conflicts
- Paving and painting improvements to formalize pedestrian areas
- Existing pedestrian character of the area with amenities and parks
- Beautiful area with natural vegetation and the rivers
- Existing bridge improvements that could be enhanced

IDEATION PROCESS

- 01.** Project background information from Town of Basalt
- 02.** Initial project site visit and inventory
- 03.** Site visit with Girl Scout Troop
- 04.** Girl Scout Troop ideas and drawings
- 05.** Brainstorming session and creation of 2 conceptual designs
- 06.** Draft implementation options

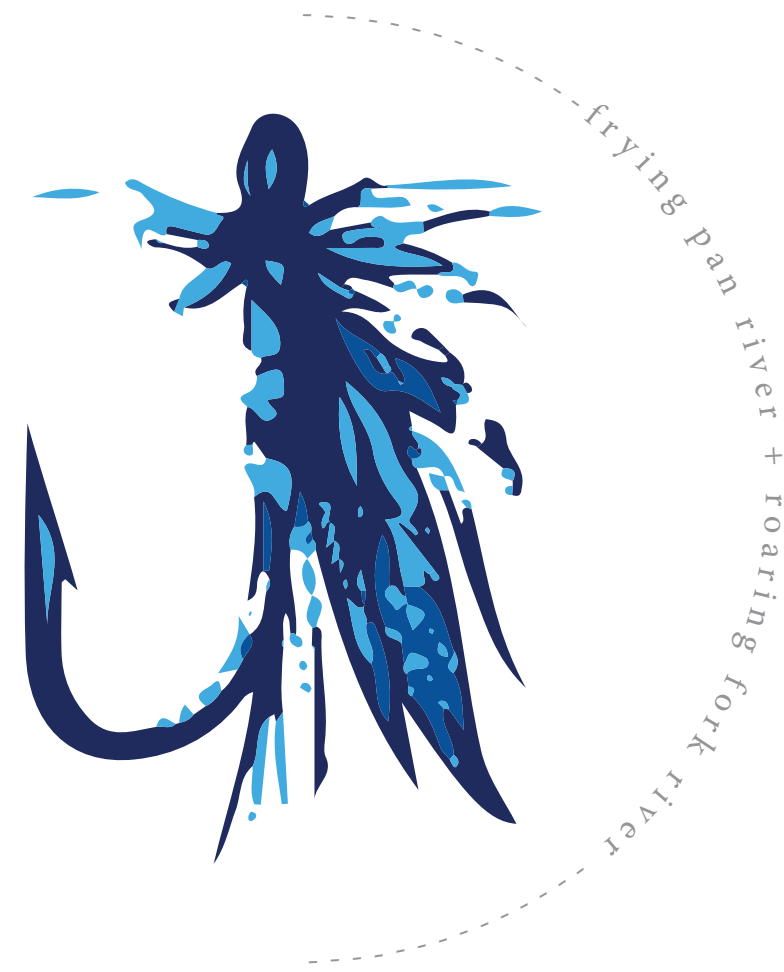








CONCEPTUAL DESIGN

BRANDING



CONFLUENCE
PARK



-  #4067b1
-  #489cd5
-  #b8d98d
-  #84c441
-  #683996
-  #9154a1

bridge conceptual plan

PEDESTRIAN BRIDGE

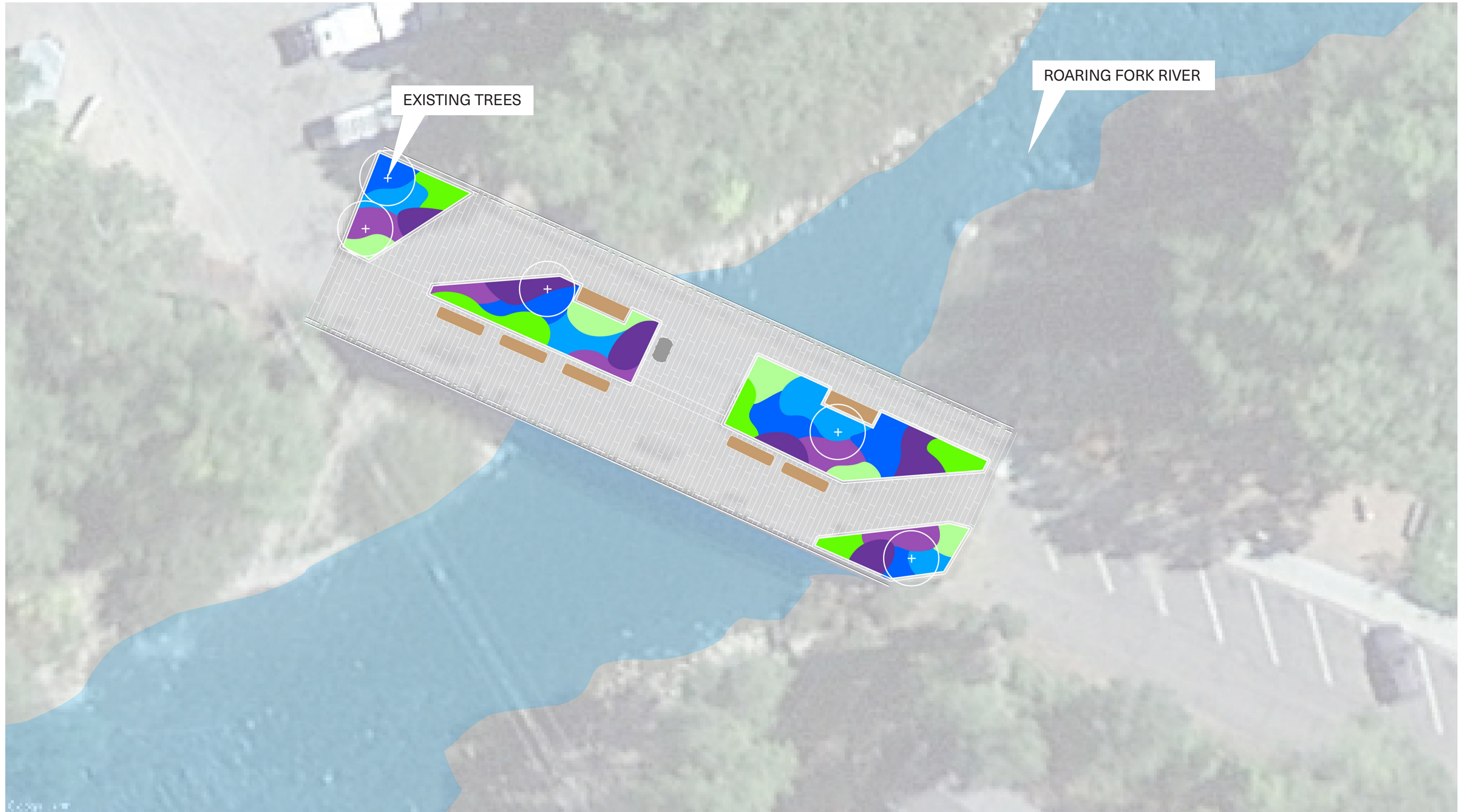
Updated design ideas focus on retaining the basic structure and overall geometry while updating materials and improving access for bicyclists and pedestrians. Key design recommendations include:

- Updating plant materials to include plants that are predominately native, drought tolerant, can provide interest in the summer and winter months, and act as a pollinator garden to promote an ecologically-rich landscape
- Simplifying planter geometry on the south side of the bridge to create a clearer path for bicyclists and pedestrians
- Replacing existing paving material throughout the bridge to a more weather-resistant paving pattern
- Relocating benches from the edge of the west side of the bridge to the interior, ensuring there are inset benches that look out toward the river on both sides of the bridge
- Incorporating timber material for inset seating to incorporate more natural materials on the bridge and compliment the existing materiality of the town
- Changing corrugated metal planters to a flat corten steel material that can weather more evenly and will not require a cap
- Refresh bridge railing to maintain transparency and coordinate with the updated bridge materials
- Maintain trash and recycling areas

bridge conceptual plan



bridge planting plan

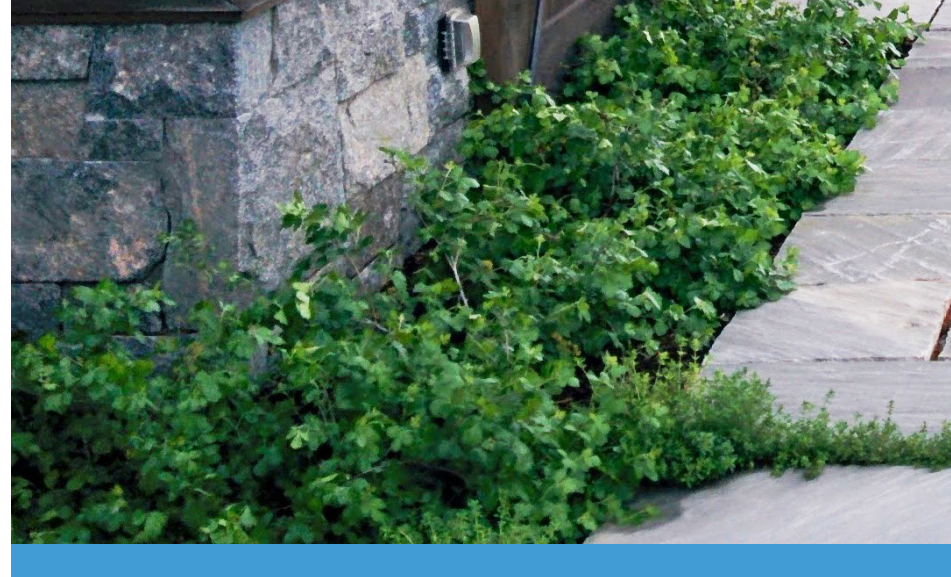


bridge planting character



1. PRAIRIE DROPSEED

Sporobolus heterolepis



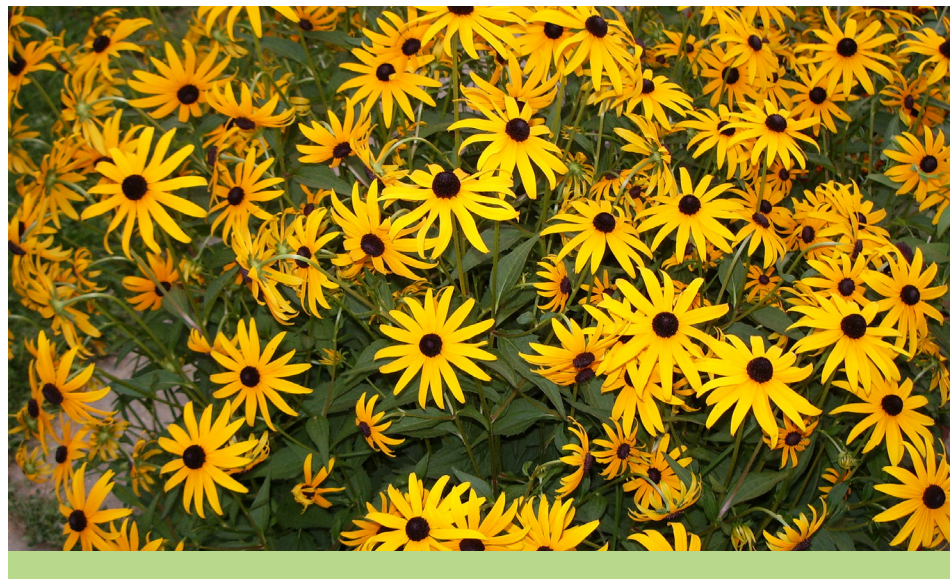
2. GRO-LOW SUMAC

Rhus aromatica 'Gro-Low'



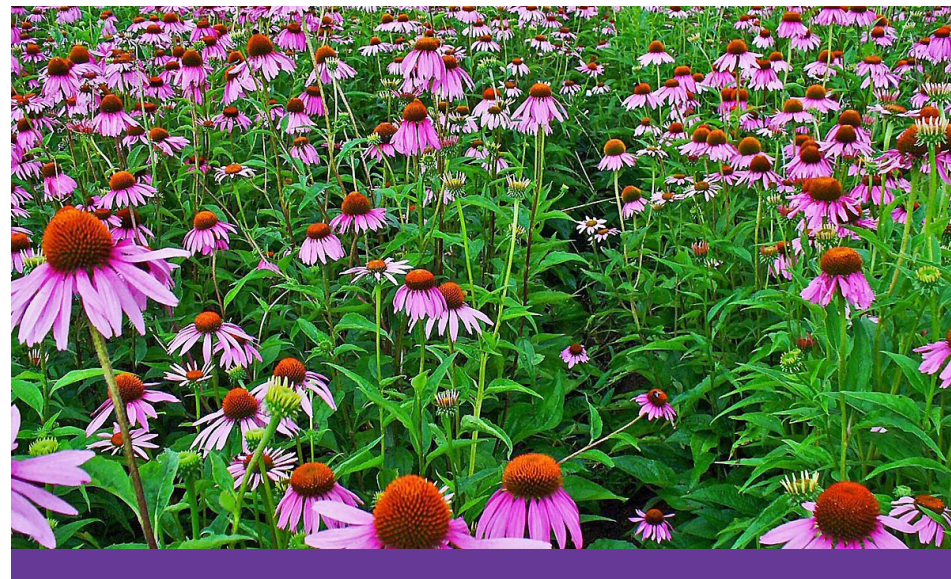
3. RUSSIAN SAGE

Perovskia atriplicifolia



4. BLACK-EYED SUSAN

Rudbeckia hirta



5. PURPLE CONEFLOWER

Echinacea purpurea



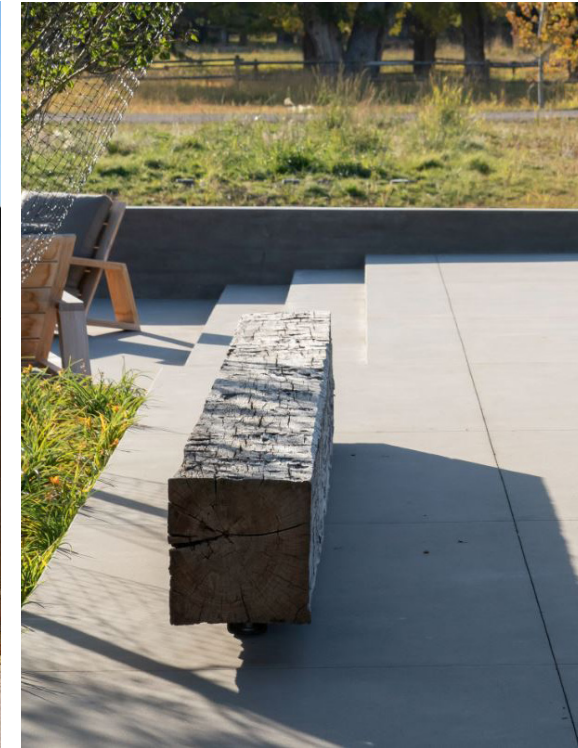
6. PRAIRIE SAGE

Artemisia ludoviciana 'Silver Queen'

bridge materials palette



CORTEN STEEL PLANTER



TIMBER BENCHES



Drifter Bench (Streetlife)



**PAVING PATTERN
EXAMPLE**



**ROUGH SAWN DETECTABLE
PAVERS**



CONCRETE PAVER
hrs-15 sri 79 (Wausau Paving)



CONCRETE PAVER
hrs-30 sri 27 (Wausau Paving)



CONCRETE PAVER
hrs-60 sri 11 (Wausau Paving)

north connection conceptual plan - 'color'

OPTION 1: COLOR

This concept incorporates color and play elements to help improve connections to the school campus. Inspired by the confluence of the rivers and the culture of fishing in Basalt, this plan integrates colorful fish and water patterns. A new plaza extension is provided off the bridge to create a new gathering space with mobile furniture, art, signage, self-watering planters, and a shade structure. New planting materials that are native to the area and continue the design of the bridge are incorporated.

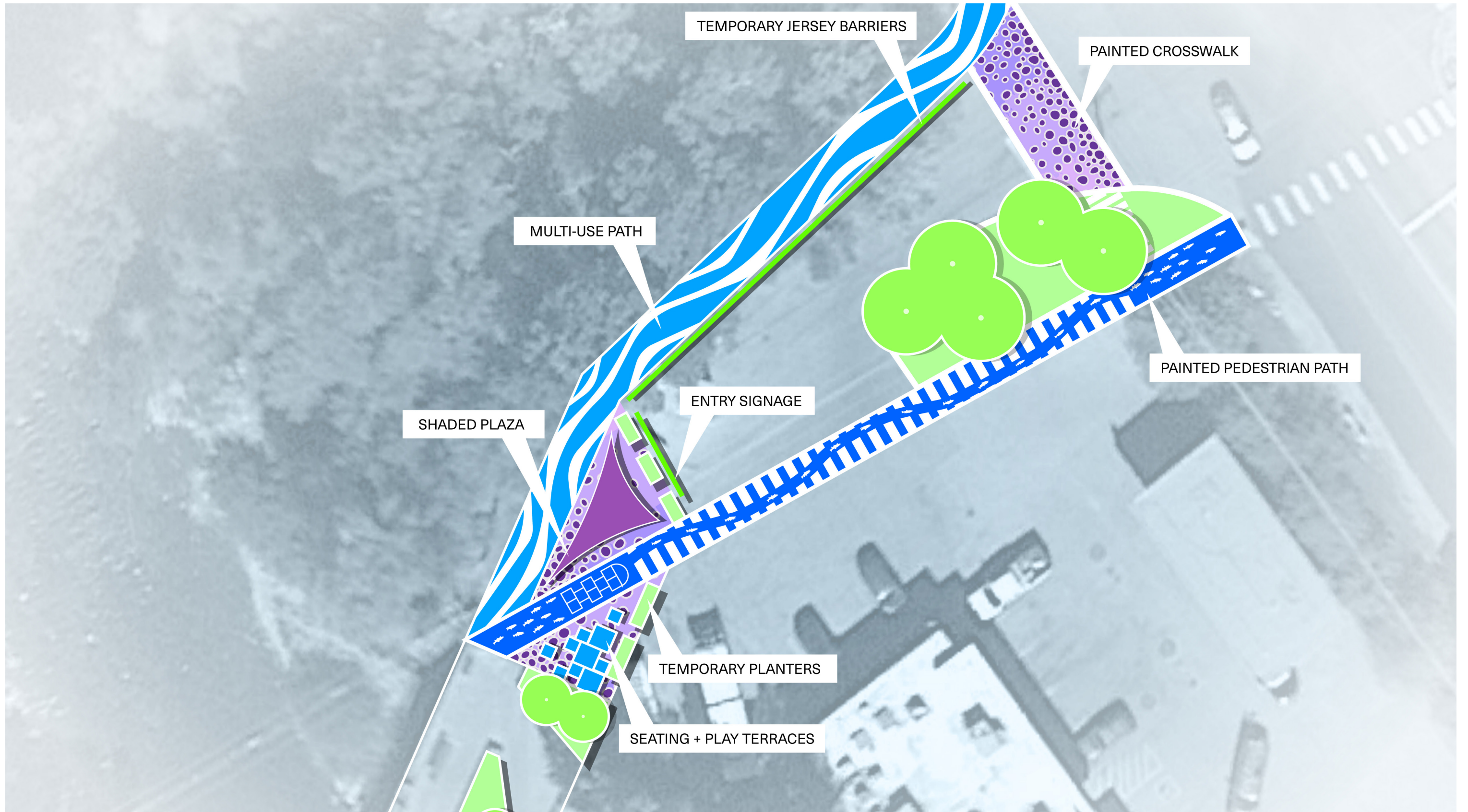
A 6-foot pedestrian path is created through painting to the southeast corner of the intersection across from the Elementary School. This could be painted by the community and school. The plan shows a school of fish traveling toward the school. A painted hopscotch court provides a playful opportunity for kids to run and jump before starting their school day. The plaza and crosswalk are painted using a trout fish pattern.

Parking along the west side of Basalt Ave. is removed and is replaced with a 10-foot multi-use path that connects the bridge to the northwest corner of the intersection, with painting that is inspired by the rivers. Temporary jersey barriers along the multi-use path provide protection for users, and can at the same time become a temporary canvas for art incorporating visual interest to the street.

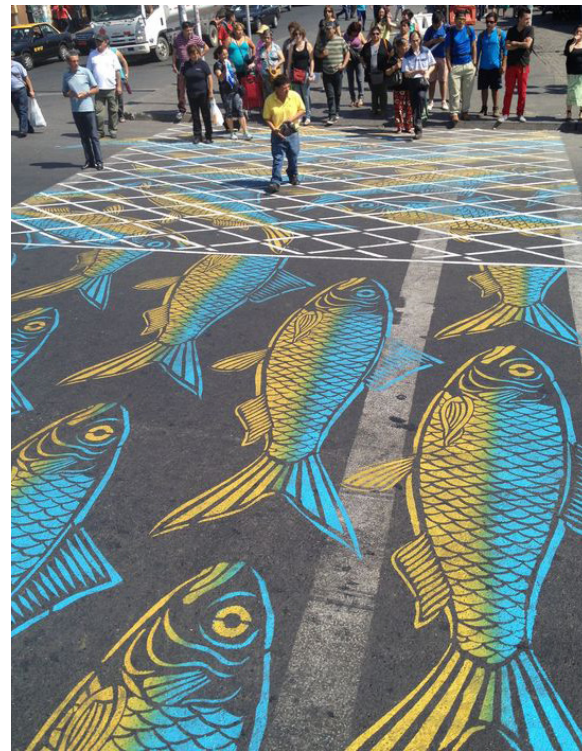
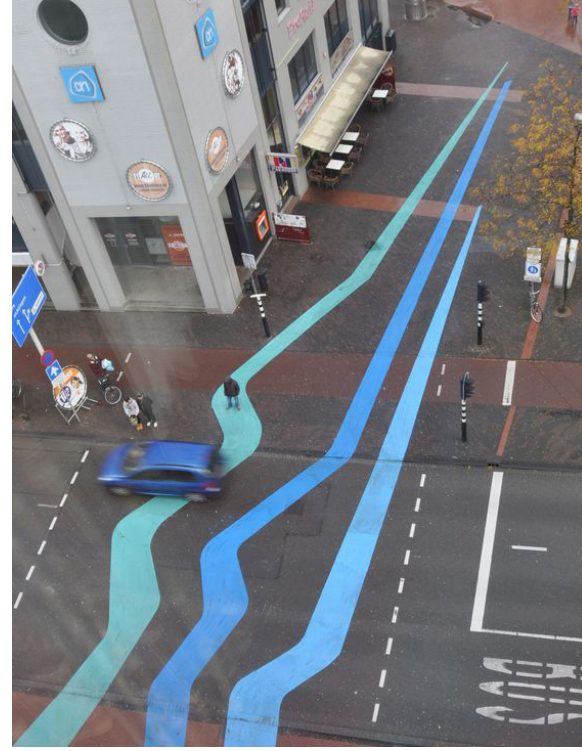
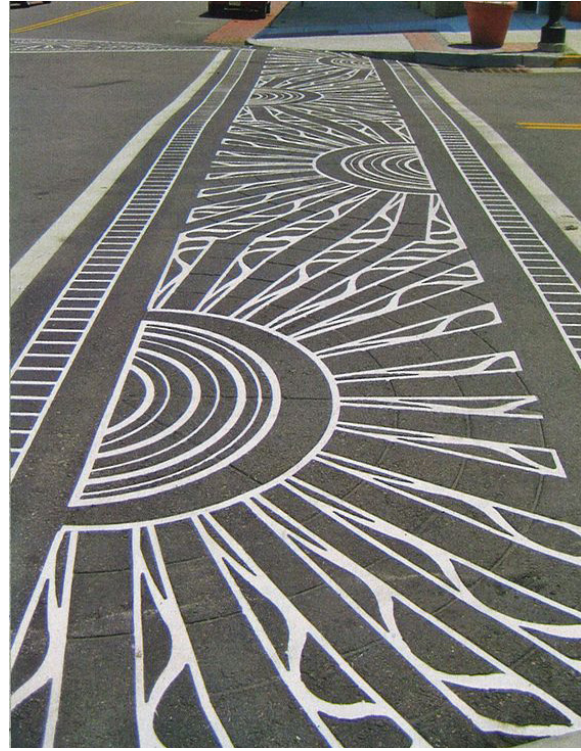
Key elements:

- No on-street parking on Basalt Ave.
- More formal plaza with seating and tables
- Two paths with playful and colorful painting

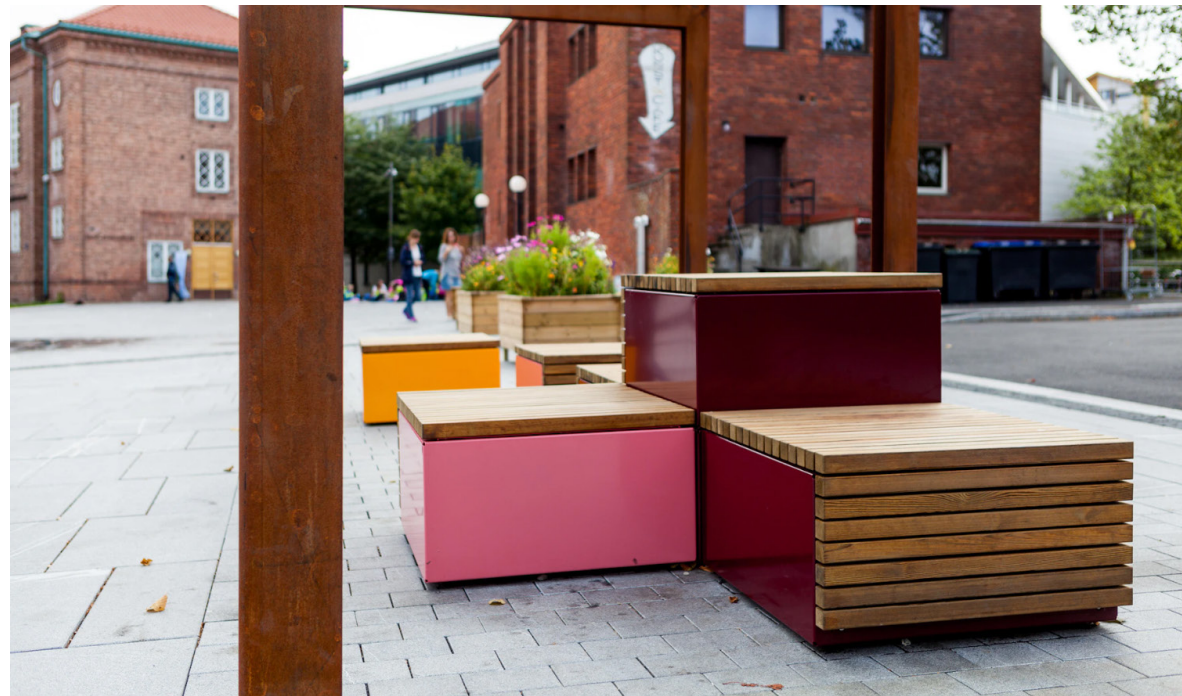
'color' conceptual plan



'color' character imagery



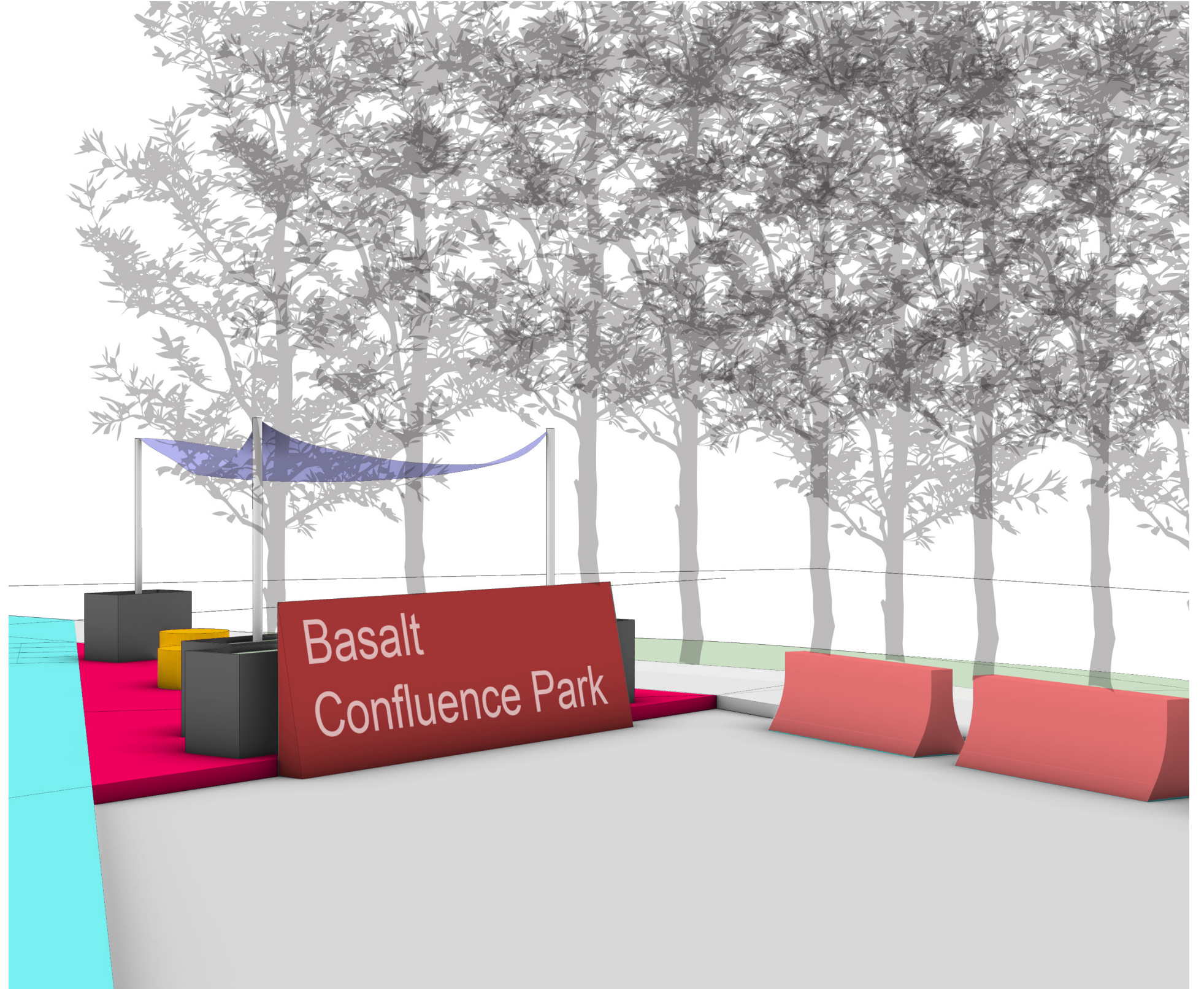
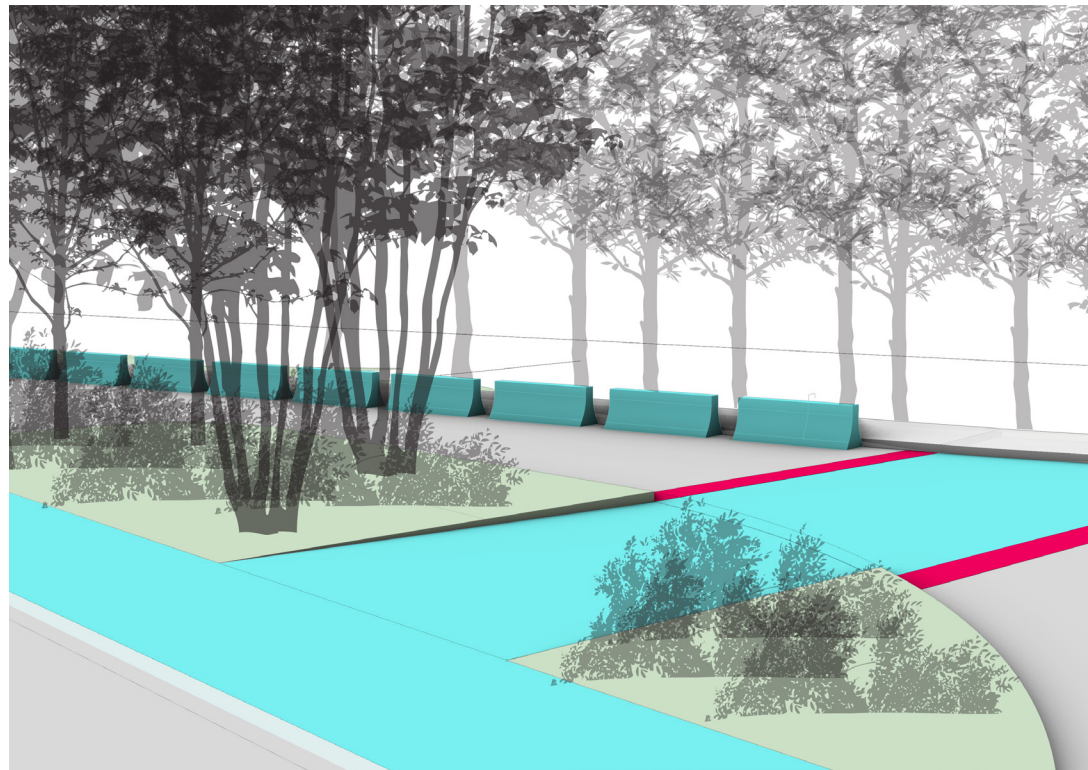
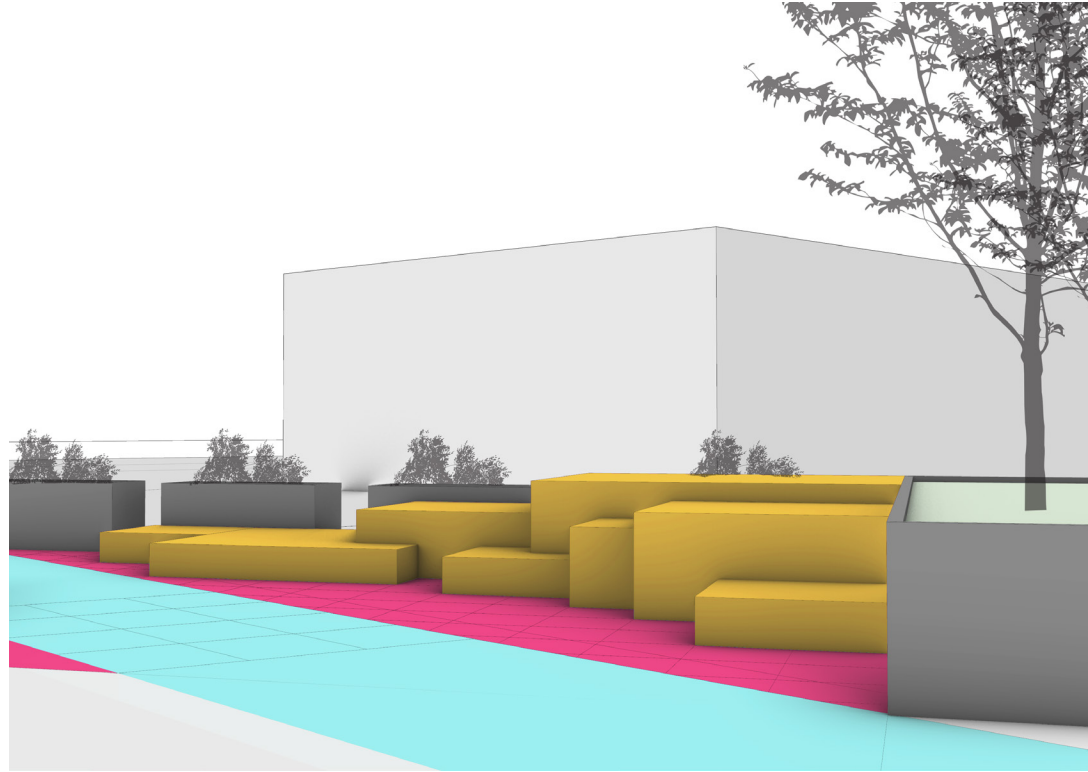
'color' character imagery



SEATING + PLAY TERRACES
CODE square modular bench (Vestre)

VROOM PLANTER
with integrated watering system (Vestre)

'color' 3d studies



north connection conceptual plan - 'nature'

OPTION 2: NATURE

This concept uses natural elements to tie into the existing riparian area that surrounds the site. Inspired by the riparian habitat with fallen wood and existing stone boulders, this plan integrates native planting and play elements using wood. A small plaza with an extension of landscaping is proposed off the bridge. A small play area with wood and boulders is protected by planters that include native vegetation.

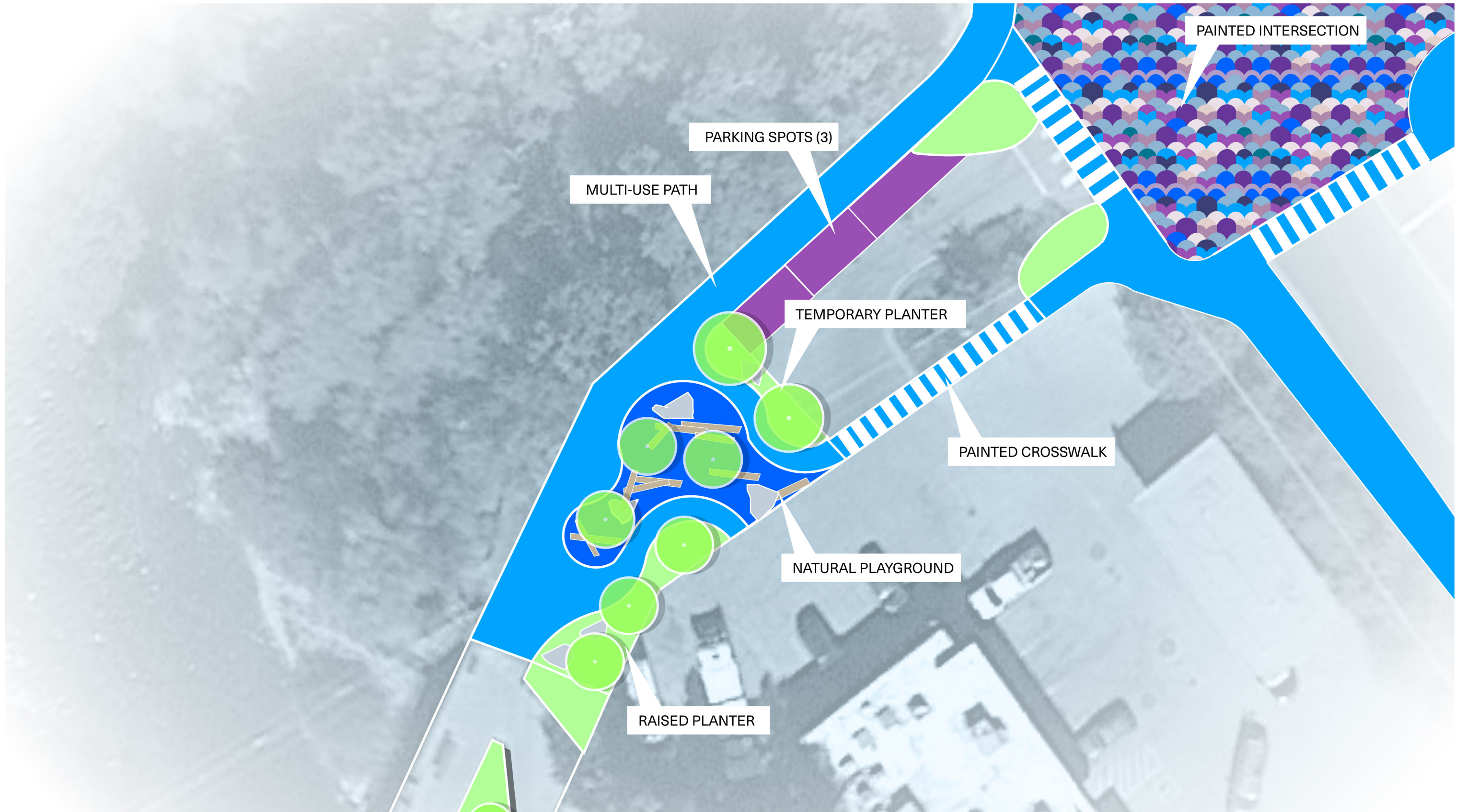
Parking along the west side of Basalt Ave. is formalized to include three parking spaces. A raised 10-foot multi-use path planned by the city links the bridge to the northwest corner of the intersection. Updated landscaped bulb-outs at the intersection help provide protection for pedestrians crossing Basalt Ave.

The intersection of Two Rivers Road, Cottonwood Drive, and Basalt Avenue is proposed to be painted and crosswalks would include a traditional striped pattern. The intersection could be more free flowing for pedestrians when the police officer is on-site.

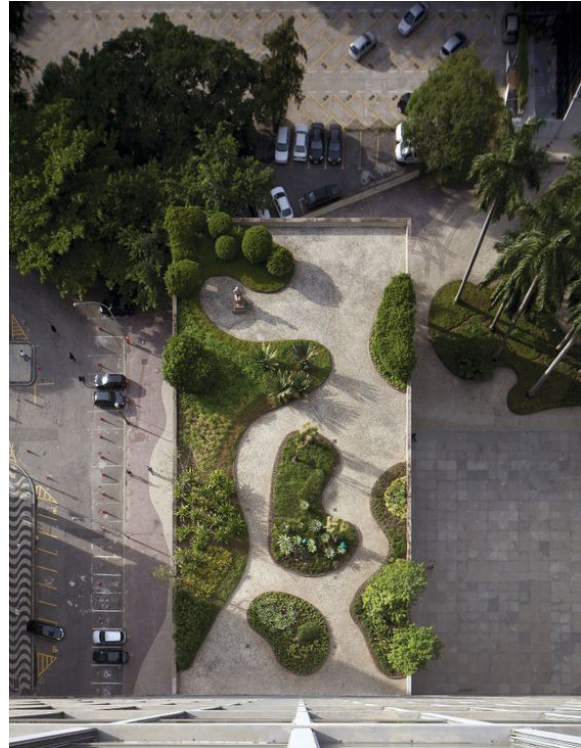
Key elements:

- Three street parking spaces on Basalt Ave
- Natural plaza area with landscaping and play elements
- Painted intersection

'nature' conceptual plan



'nature' character imagery



PHASING PLAN

Each concept can be phased to integrate improvements as budget is available.

PHASE 1 – CLEAR PATHWAYS

- Complete painting to delineate areas for pedestrians and bicyclists
- Add temporary jersey barriers along the multi-use path, potentially with painted artwork (Color Conceptual Design)

PHASE 2 – SAFE SPACES

- Add planters to provide protected plaza area
- Incorporate furniture, lighting, and seating / tables to be used in protected plaza

PHASE 3 – INTEGRATED DESIGN

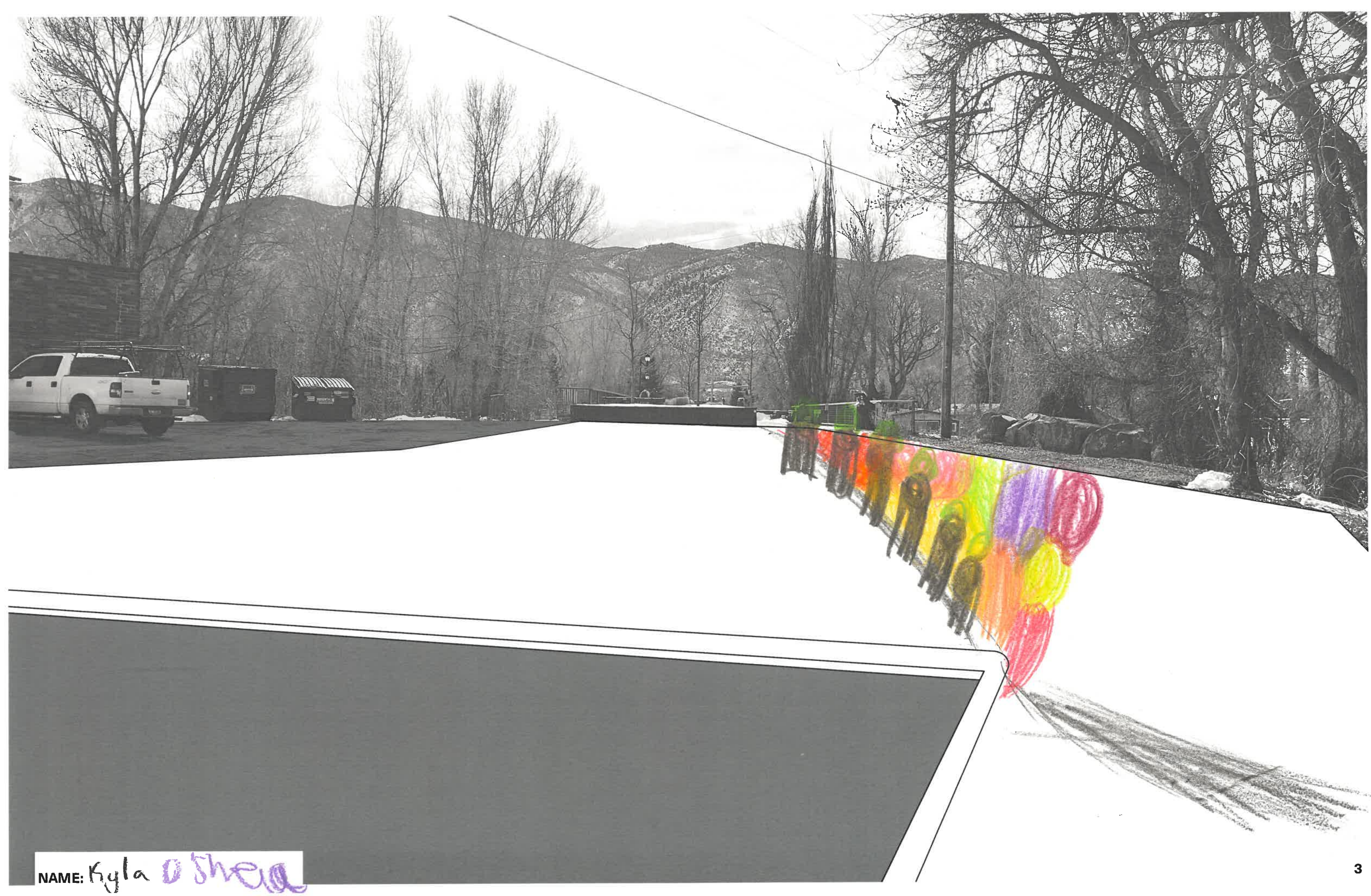
- Add new plant material
- Add signage for confluence park
- Add natural steps toward current Confluence Park

APPENDIX

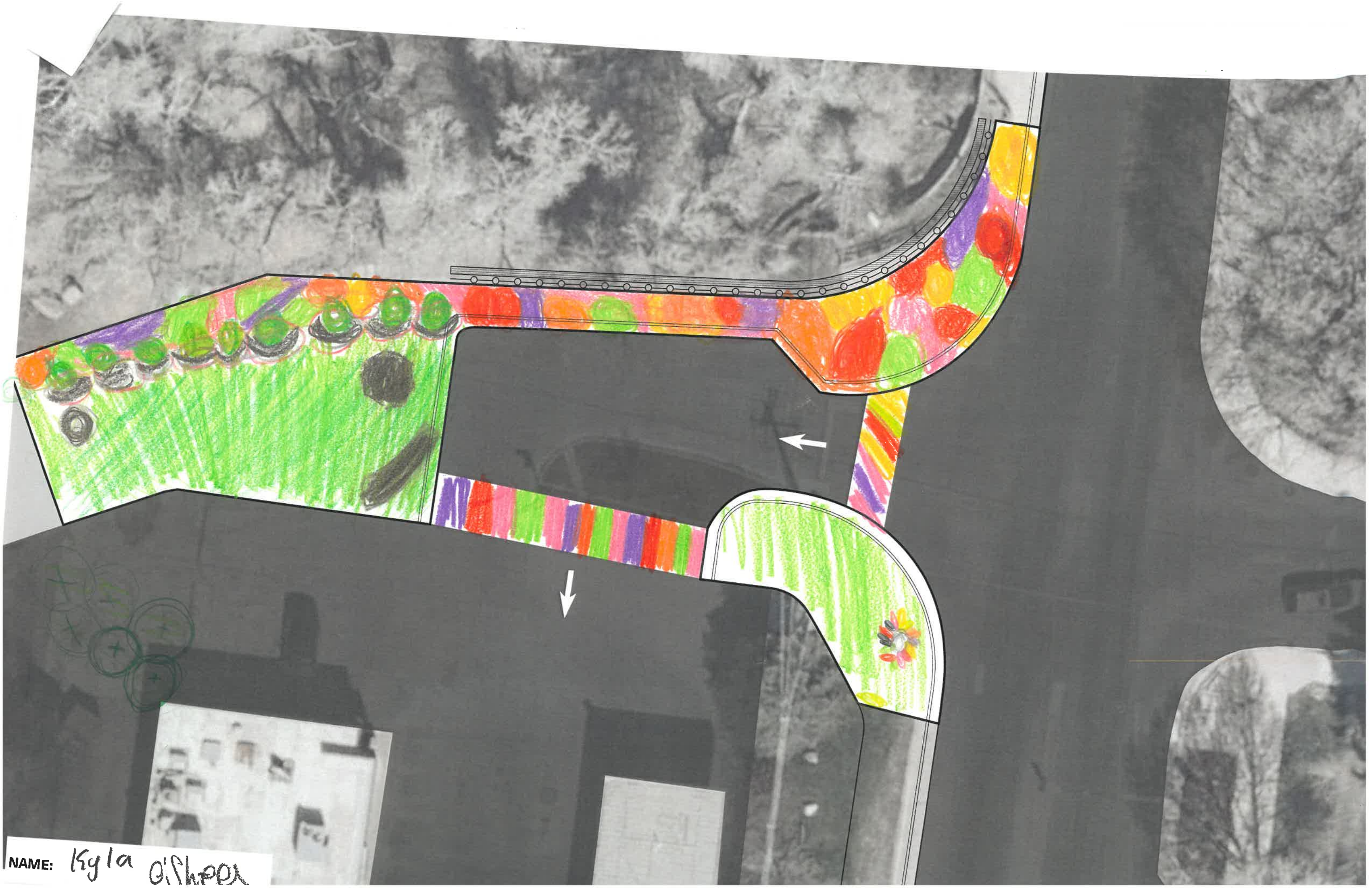
ENGAGEMENT MATERIALS



NAME: Izzy, Penny



NAME: *Kyla O Shea*



NAME: Kyla O'SHEA



NAME: Hazel & Greta F.



Cooking
Cooking

Puzzle pieces

Fake grass for winter

Stairs

Repair Street

NAME: Aie



side walk

side

walk

ice rink

lights
under
ice

pre
paring
spot

NAME: Clara, Sonya



side walk

more flowers

bees and butterflies
flowers

free snacks

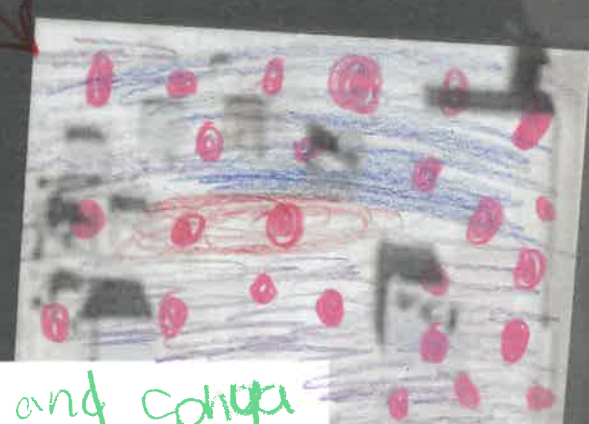
NAME: Clara, Senya



Ice rink

Ice rink

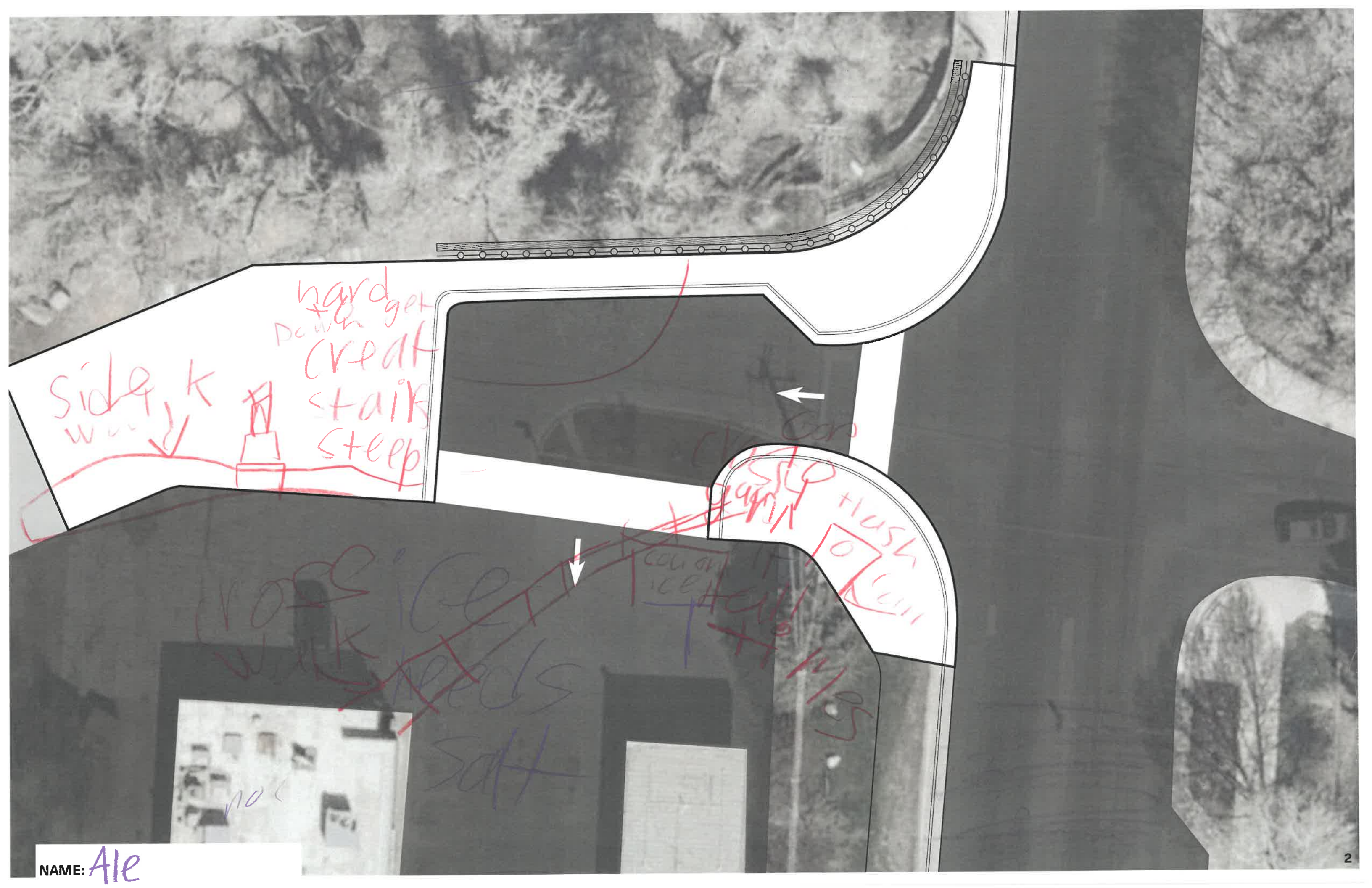
make
7-11 more
colorful



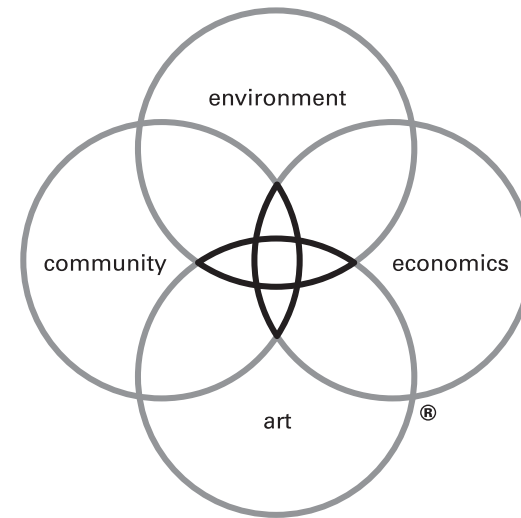
NAME: Clara and Sohyu



NAME: Hadley + Abi



NAME: Ale



DW LEGACY DESIGN[®]

Legacy Design is the defining element of our practice. It is our commitment to an elevated level of design inquiry to arrive at the optimal solutions for clients. The process ensures that our projects reflect the critical issues facing the built environment and that they deliver measurable benefit to clients and communities. It is the foundation of the firm's workshop culture and guides all projects.

